

# LAMAR SOFTWARE, INC.

Efficiency



Productivity



Flexibility



Connect your suppliers, vendors and business partners in real-time over the Internet with LAMAR Software's proven web-enabled ERP suite.

**Info • Net**

Enterprise Resource Planning

[www.lamarsoftware.com](http://www.lamarsoftware.com)

# Affordable Enterprise Solutions from LAMAR Software

Since 1996, we've provided award-winning enterprise business software to manufacturing and distribution companies throughout the United States. LAMAR Software pioneered web-based ERP with the introduction of Info.Net: an Internet-ready ERP solution for small and medium-sized manufacturers. With Info.Net, manufacturers can take advantage of ERP system benefits at an affordable cost.

LAMAR Software's Info.Net is a complete ERP system covering manufacturing, finance, distribution, sales management, and planning. Our business concept is to increase the efficiency of companies by providing a comprehensive and flexible ERP system.

The table below represents a sample of various applications in the Info.Net suite.

Manufacturers and distributors who need integration with their supply chain can choose from application modules covering the full range of production and accounting requirements. The numerous Info.Net system functions include manufacturing with order configuration, engineering control, shop floor control and supply-chain functions allowing for unlimited flexibility in order management, fulfillment and analysis.

The Info.Net system is designed to be flexible. It is based on a scalable architecture that can accommodate changes in technology.

System customizing and program modification is available through our professional support services.

## Info.Net Applications

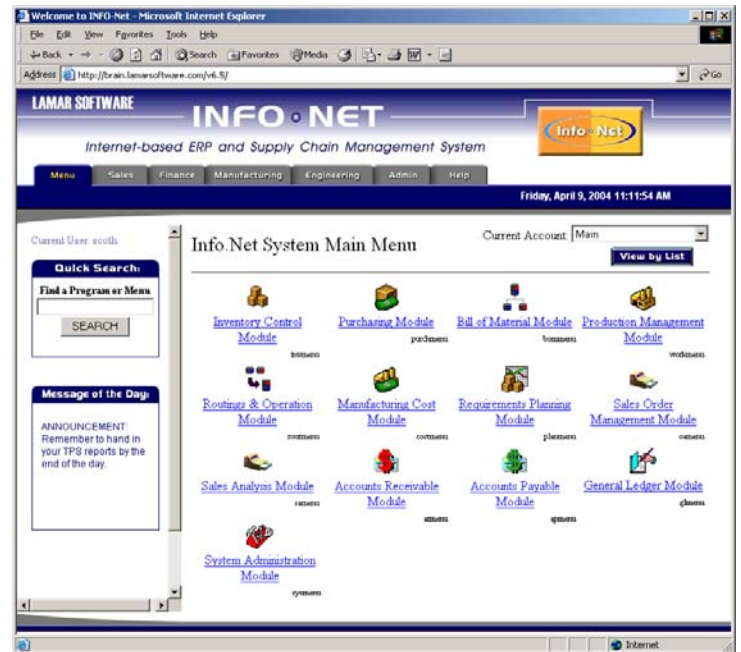


# Info.Net: Easy to Use and Easy to Change

An ERP system should be powerful, yet easy to use. It should be easy enough for the first time user and powerful enough for expert users in different work environments. Moreover, an ERP system must be able to meet the changing needs of a growing enterprise. Info.Net is a web-enabled ERP system that fulfills these requirements.

The Info.Net user interface was designed to help optimize workflow by presenting clear input elements and simple navigation tools. Graphic icons representing each application module are easy to identify. Even a novice user can visualize the system's operation.

Users can shape Info.Net to fit their own needs. Parameter maintenance menus control standards of routine functionality. Business parameters can be predefined or can be modified as your needs change. Individual users can tailor their own work environment through the system's flexible menu and program structure.

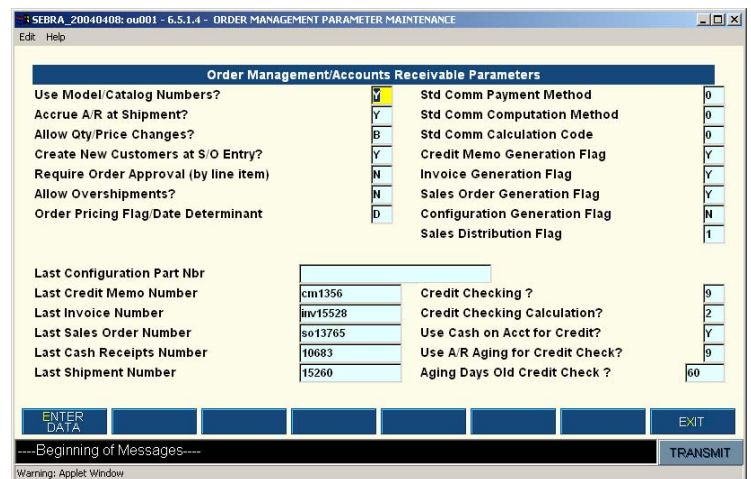


## Visually Intuitive Menu

*Info.Net combines the familiar web browser interface with visually intuitive features and reliable navigation tools to speed up your workflow. Users can quickly view all the available modules, conduct a search for a specific program, or access the system help menu.*

## User-defined Parameters

*Info.Net can easily be configured to fit the way each organization or user conducts business. This flexibility allows Info.Net to change as your business evolves. The system will never become obsolete, and your information needs will never restrict operations.*



# Functional Highlights



## Cross Section of System Functionality

WORK IN PROCESS	SALES ORDER MANAGEMENT	DISTRIBUTION CENTER
Multi-Plant Capability	Multi-Level Customer Definition	EDI Shipment Notification **
Work Orders	Configurable Orders	EDI Order Change Notification **
Rework Orders	Model/Feature/Option Control	Sales Order Explosion
Work Orderless	Credit Checking	Inventory Management
Configured Work Orders	Product Line Reporting	Order Prioritization
LEAN Manufacturing Process	Salesman Reporting	Multiple Picking Systems
Automatic Back Scheduling	Pricing by Customer/Product	Warehouse Balancing
Manufacturing Calendars	Multiple Ship Codes	Physical Inventory
Split Released Work Orders	Multiple Inventories	Bar Code Interface
Parts Issued or Backflushed	Shipment Analysis	Document Production
Alternate BOMs & Routings	Sales History	Shipment Method Coordination
Issue by Operation	Inventory Status	Container Management
Outside Job Control	Interface to Shipping	Automated Interface to RS
Job Value	Interface to Accounting	Order Status Notification
Floor Stock	Interface to WIP	Interface to Order Entry System
PRODUCTION SCHEDULE	PRODUCTION REPORTING	SHOP FLOOR CONTROL
Interface with Sales Orders	Efficiency Reporting	Bar Code Input
Multiple Production Schedules	Shop Floor Labor Reporting	Labor Input
Scheduling by Warehouse	Machine Hour Tracking	Materials Tracking
Master Production Schedule	Project Tracking	Reject Tracking
Schedule by Production Rate	Product Tracking	Scrap Tracking
Schedule by Revision Level	Work Orders	Machine Time Loading
Shop Floor Labor	Operations	Time Clock Recording
Production Reporting	Quality Reporting	Shop Floor Reporting

\*\* Custom Installation

Functional Highlights Continued on Page 5

# Functional Highlights 2



## Cross Section of System Functionality

INVENTORY CONTROL	BILL OF MATERIAL	PURCHASING
Material Transactions	Part Usage Information	Vendor Definition
Full Lot Control by Part	Engineering Bill of Materials	Direct Material
Full Serial Control	Planning Bill of Materials	Indirect Material
Stock Locators	Manufacturing Bill of Materials	Subcontract Purchase Orders
Multiple Warehouses	Revision Control	Drop Shipments
Balance by Revision Level	Effectivity Dates	Approved Vendors
ABC Analysis	Class Codes	Vendor Hold
Cycle Counting	Unit of Measure Control	Vendor Performance
Unlimited Units of Measure	Use to Deplete	Vendor Cross Reference
Quality Tracking	Phantoms	Manufacturer Cross Reference
General Ledger Update	Where Used Inquiry	Accounts Payable Interface
Inventory Status Reporting	Single Level and Indented Bills	Purchase Price Variance
MATERIAL REQUIREMENTS PLANNING	COST ACCOUNTING	BUDGETING
Full Regenerative MRP	Costed Bills	Unlimited Budgets
Unlimited Horizons	Planned Cost Roll Up	Variance/Percentage Reports
Bucketless Scheduling	Standard Cost Roll Up	Entity Budgets
Full Pegging	Actual Cost Roll Up	Project Budgets
Engineering Change Control	Transactions at Standard	Department Budgets
Safety Stock	Average Cost Tracking	Budget Analysis Worksheets
Safety Lead Time	Production Efficiency Reports	User-defined Report Formats
Order Multiples		
Non-Nettable Controls		
Use to Deplete		
Paperless MRP		
Multiple Inventories		

Functional Highlights Continued on Page 6

# Functional Highlights 3



## Cross Section of System Functionality

### PROJECT TRACKING

- Link Projects to Orders
- Approval Hierarchy
- Work Order Interface
- Material Control Interface
- Shop Floor Interface
- Labor Tracking
- Purchasing Interface
- Project Traceability
- Project Budgets
- Project/Activity Hierarchy

### ACCOUNTS RECEIVABLE

- Sales Order/Shipping Interface
- Automatic Invoices
- Manual Invoices
- Credit Memos
- Invoice Ageing
- Cash Receipts Forecasting
- Cash Application
- Advance Payment Control
- Customer Statements
- Period Reconciliation

### ACCOUNTS PAYABLE

- Purchasing/Receiving Interface
- Debit Memos
- Asset Tracking
- Cash Requirement Forecasting
- Payment Selection
- Multiple Banks
- Automatic Checks
- Manual Checks
- Bank Statement Reconciliation

### GENERAL LEDGER

- Multi Division
- Manual Journals
- Automatic Journals
- Recurring Journals
- Pending Journals
- Reversing Journals
- Account Allocation
- Transaction Records
- User-defined Report Formats

### INFO.NET SYSTEM HIGHLIGHTS

- |                             |                            |
|-----------------------------|----------------------------|
| 99 Security Levels          | Completely Web-enabled     |
| User-defined Parameters     | ASP Hosting Available      |
| User-defined Report Formats | Rapid Training and Support |

A feature-rich set of fully integrated applications, Info.Net contains hundreds of inquiries with drill-down capabilities. The system is comprised of modular functions that can be used as independent applications or combined to give you the necessary tools to run your enterprise and optimize your supply chain.

Info.Net functions can also be integrated with other business applications to "fill in the gaps" of an existing ERP system.

With a flexible architecture, Info.Net can adapt to changes in technology. Users can define their own business rule parameters. Info.Net is designed to fit your business, instead of forcing your business to fit the system.

LAMAR Software provides mission-critical and secure ASP Hosting for companies who wish to use Info.Net over the Internet.



# Info.Net Advantages

## ***Flexible ERP System***

Info.Net application functions are designed to be flexible. They can be used individually or in combination to provide the necessary information tools. Info.Net can even be used to modify or replace all or part of an existing ERP system. Functional parameters can be easily set or changed as needed. Users have virtually unlimited possibilities to shape the system to fit individual needs.

## ***ASP Hosting***

LAMAR Software provides ASP Hosting services for Internet access to the Info.Net system. We have been providing mission-critical and secure Application Service Provider (ASP) services since 1998. Our dedicated server farm provides virtually uninterrupted information flow. With our hosting services, all you need is a PC and an Internet connection to use the system. There is no need to purchase computer equipment, no requirements to install large applications, and no need to set up a server network.

## ***Affordable Pricing***

LAMAR Software offers two affordable pricing plans for the use of Info.Net:

- 1. Enterprise Licensing:** One-time fee for each concurrent user.
- 2. ASP Hosted:** A one time setup fee and a fixed monthly fee for each listed user.

## ***Adaptable Architecture***

Info.Net is built on object layers that can be easily modified to accept new and current developments. A technology change (i.e. databases, communications, hardware, operating systems, and user interfaces) can be accommodated simply by changing the appropriate object layer. This adaptability ensures that the system will not become obsolete from a change in technology.

## ***Customizing & Modifications***

LAMAR Software is one of the few developers that maintains a custom development staff dedicated to our customer's requirements. These custom services include system modification, custom development, and assistance with business process re-engineering. The development of specialized ERP extension applications and system modification is an added benefit to our customers who may require functionality beyond the system's standard capabilities.

# Professional Support from LAMAR Software

**W**e are committed to providing a complete range of professional support services focused on making your use of the Info.Net system effective, efficient, and profitable.

LAMAR Software professional support services include initial implementation, ongoing use, new business practices, modifications, and assistance with process re-engineering.

We understand that small companies can't afford to spend years implementing a new system with expensive consultants. Most ERP systems require months to set up and costly training before they become useful. These expenses have prevented many smaller companies from enjoying the benefits of an effective information system.

## **Innovative Training Tools**

Our new training tools reduce implementation times by 75% and cut training costs by more than 80% over conventional ERP Systems. The result is high-speed productivity with optimal use of capital and resources.

## **Real-Time Supply Chain Management**

*Real-Time information flow offers an instantaneous view into supply chain operations and facilitates e-business. Info-Net provides direct access to customers and suppliers for fast collaboration and control. Real-Time supply chain collaboration results in cost reductions, better tracking, reduced inventory, and greater customer satisfaction.*

## **Rapid-Startup Advanced Implementation Methods**

**O**ur implementation methods are designed to get our new users quickly running on Info.Net. The startup program is a combination of implementation procedures, training and predefined business rule selections. It is tailored for your company. Using a full project management system to plan and track each item of work that anyone has to do, we commit to an implementation schedule that fits your needs. The average implementation time for the Info.Net system is less than 60 days.



website [www.lamarsoftware.com](http://www.lamarsoftware.com)

email [info@lamarsoftware.com](mailto:info@lamarsoftware.com)

telephone 805-929-1482



NCA Members